



**ALASKA DIVISION OF HOMELAND SECURITY &
EMERGENCY MANAGEMENT**

SITUATION REPORT 21-102 • APR 12, 2021



Toll-Free 1.800.478.2337

Anchorage Area 907.428.7000

SEOC 907.428.7100

<p><u>SEOC Preparedness Level</u></p> <p>Heightened Awareness – Response to COVID-19 and Recovery from December Southeast Storms</p>	<p>http://ready.alaska.gov</p>	<p><u>National Terrorism Advisory System:</u></p> <p>View this site for the latest NTAS bulletin: read the current NTAS Bulletin here.</p>
<p><u>Maritime Security (MARSEC)</u></p> <p>Level:1-Minimum Appropriate Security Measures</p>	<p>WHO Novel Coronavirus Pandemic (COVID-19):</p> <p>2019 Novel Coronavirus</p>	<p><u>Alaska Military Installation Force Protection Level:</u> FPCON Bravo</p>

(Significant changes from previous situation reports are in red.)

THREAT LEVEL CHANGES:

None

Significant Issues:

Coronavirus (COVID-19) Pandemic:

A unified command has been established at the SEOC. The SEOC continues to support statewide response to COVID-19.

State of Alaska Department of Health and Social Services (DHSS)

DHSS is operating as the Medical Branch under the State EOC/Unified Command.

For more information about the outbreak refer to:

<https://covid19.alaska.gov/>

<https://www.cdc.gov/coronavirus/2019-ncov/index.html>

The Alaska DHSS website is located at <http://dhss.alaska.gov/Pages/default.aspx>

NTAS BULLETIN

The United States Department of Homeland Security has issued a National Terrorism Advisory System Bulletin effective January 27, 2021 for a heightened threat environment across the United States.

Read the bulletin here: https://www.dhs.gov/sites/default/files/ntas/alerts/21_0127_ntas-bulletin.pdf

Travel Alerts and Conditions

COVID-19 Health Advisories may affect travel. Check <https://covid19.alaska.gov/> for current advisories.

For current driving conditions dial 511 or link to <http://511.alaska.gov/>

Barry Arm Landslide / Tsunami Risk

For the latest information on the Barry Arm Landslide and Tsunami risk, click here:

[DGGS Barry Arm Landslide and Tsunami Hazard](#)

Recent Earthquakes

USGS Earthquake Information: <http://earthquake.usgs.gov/>

National Tsunami Warning Center: <http://tsunami.gov/>

Alaska Volcanoes

Cleveland Alert Level: **Advisory** and Aviation Color Code: **Yellow**

Semisopchnoi Alert Level: **Watch** and Aviation Color Code: **Orange**

Veniaminof Alert Level: **Watch** and Aviation Color Code: **Orange**

For Alaska Volcano updates, go to: <https://www.avo.alaska.edu/>

Air Quality Index (AQI) Advisories

For the most up to date Air Quality Index Advisories:

<http://dec.alaska.gov/Applications/Air/airtoolsweb/Home/Index>

Avalanche Forecast:

Check the Avalanche Forecast Center closest to your area for the most up to date information on Avalanche potential. <https://alaskasnow.org/> or <https://www.weather.gov/afc/avalanche>

Spills of Oil and Hazardous Substances

The ADEC Spill Prevention and Response page is located at:

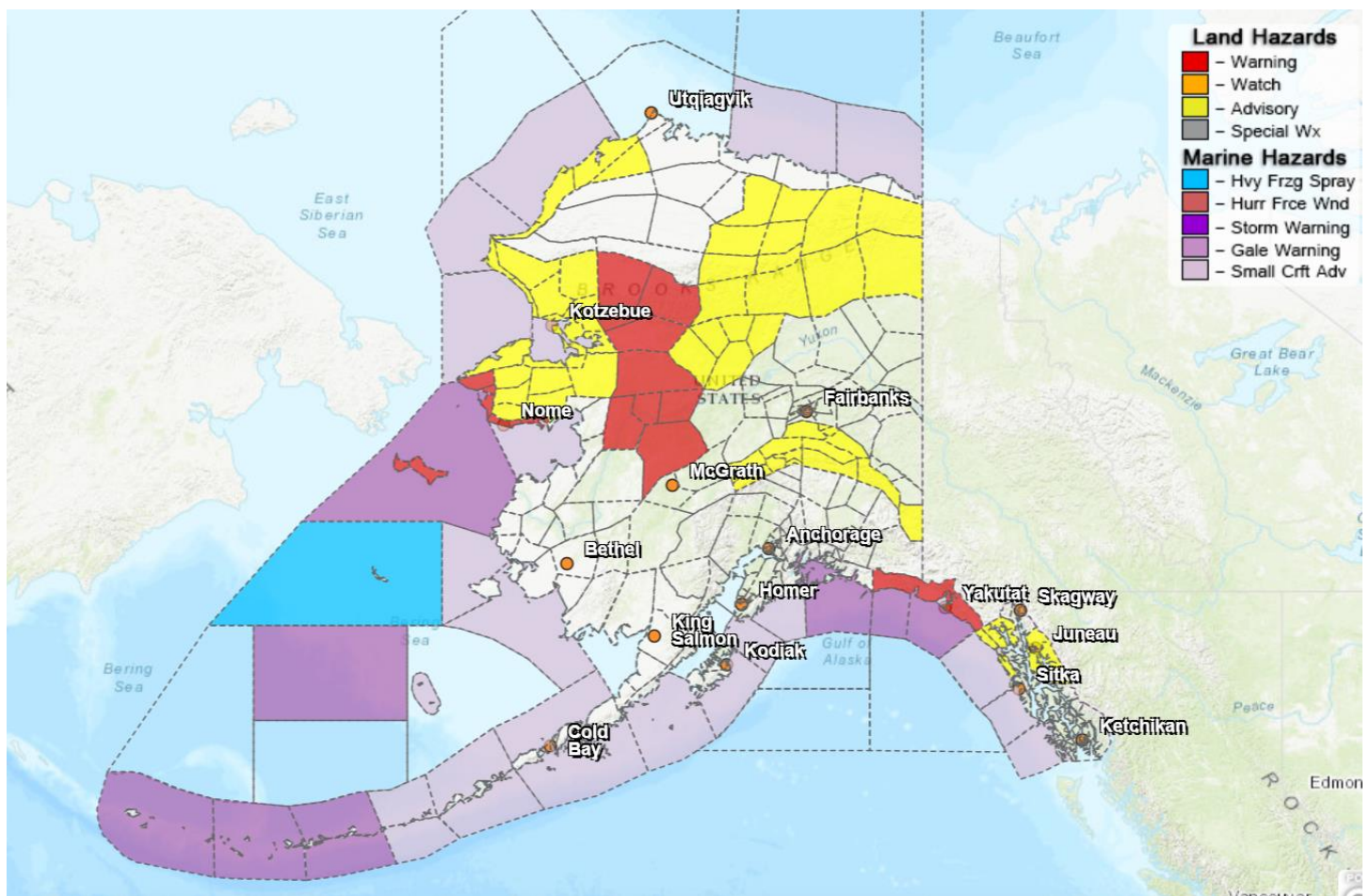
<http://dec.alaska.gov/spar/ppr/spill-information/response/>

Alaska Cyber Security Information

State Employees may sign up for cybersecurity notifications and alerts at

<https://oit.alaska.gov/Security>

Significant Weather:



A Winter Storm Warning is in effect for the following areas:

- Upper Kobuk and Noatak Valleys until 1:00 P.M. today for heavy blowing snow.
- Yakutat until 4:00 P.M. today. Heavy snowfall is expected with total accumulations of up to 12 inches possible.
- Southern Seward Peninsula Coast until 6:00 A.M. tomorrow. Heavy blowing snow with up to 7 inches of accumulation possible across the region.

A Blizzard Warning remains in effect until 2:00 P.M. today for St. Lawrence Island and the Bering Strait Coast.

Winter Weather Advisories are in effect for the following areas:

- Chukchi Sea Coast, Baldwin Peninsula, and the Selawik Valley until 10:00 A.M. today.
- Lower Kobuk and Noatak Valleys until 1:00 P.M. today.
- Juneau and Northern Admiralty Island until 4:00 P.M. today.
- Western Arctic Coast and the Brooks Range until 7:00 P.M. today.
- Northern and Interior Seward Peninsula until 6:00 A.M. tomorrow.

High Wind Advisories are in effect for Denali, the Eastern Alaska Range, and Deltana and Tanana Flats until 7:00 P.M. today. Wind gusts of up to 60mph are possible.

For more information and the most current weather, Watches / Warnings / Advisories go to:

<http://www.weather.gov/arh>

The Next Situation Report: will be 13 April 2021. A significant change in the situation or the threat level will prompt an interim report.

This report is posted on the internet at <https://ready.alaska.gov/sitrep>. To register for email distribution, go to <http://list.state.ak.us/mailman/listinfo/dhsem.situation.report>. Direct questions regarding this report to the SEOC at 907-428-7100 or seoc@alaska.gov